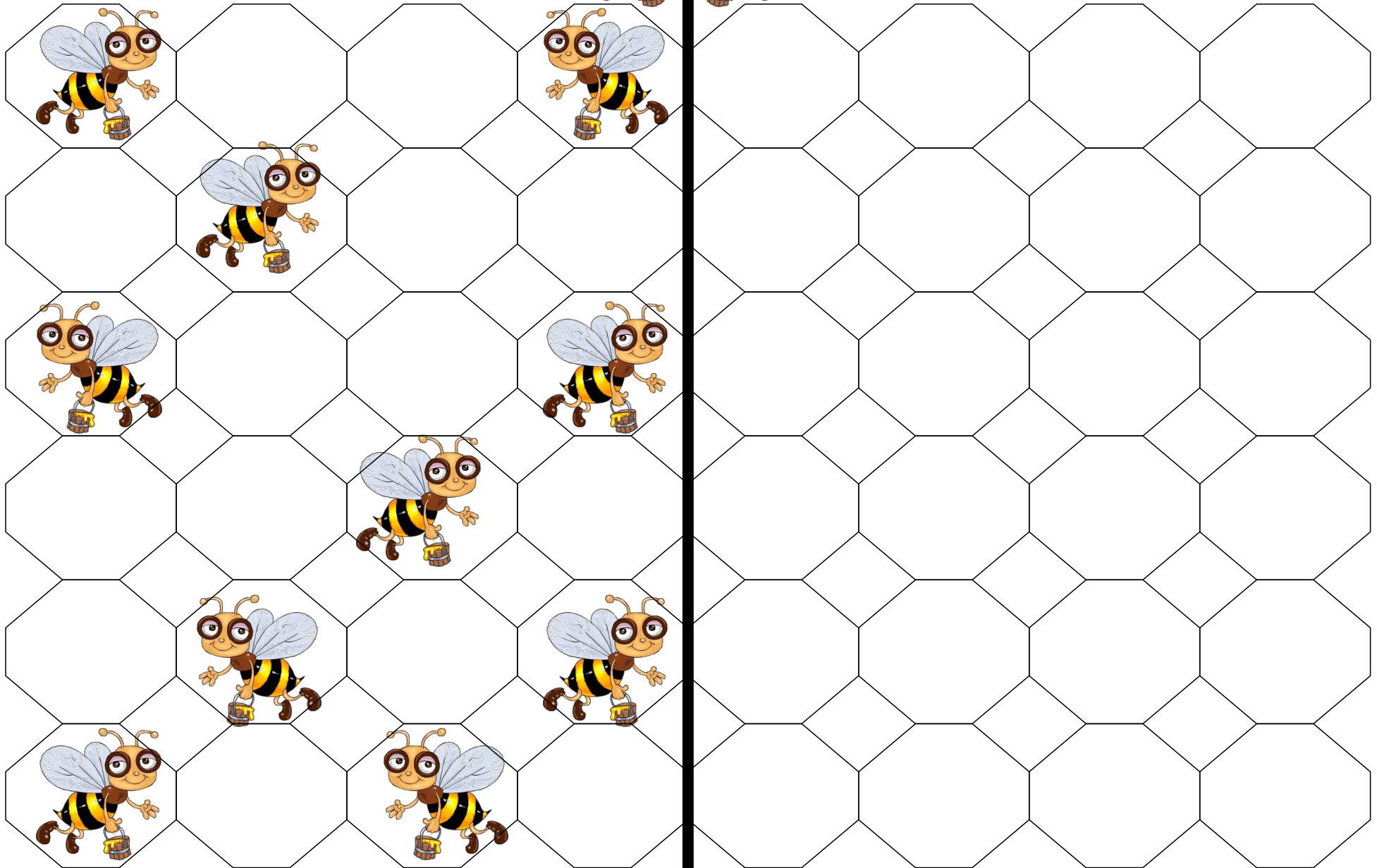
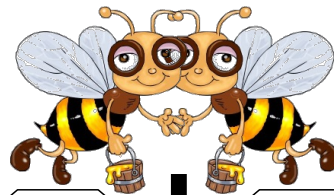
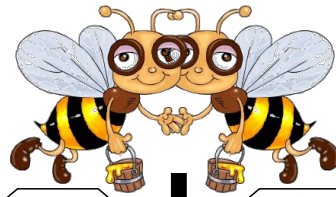
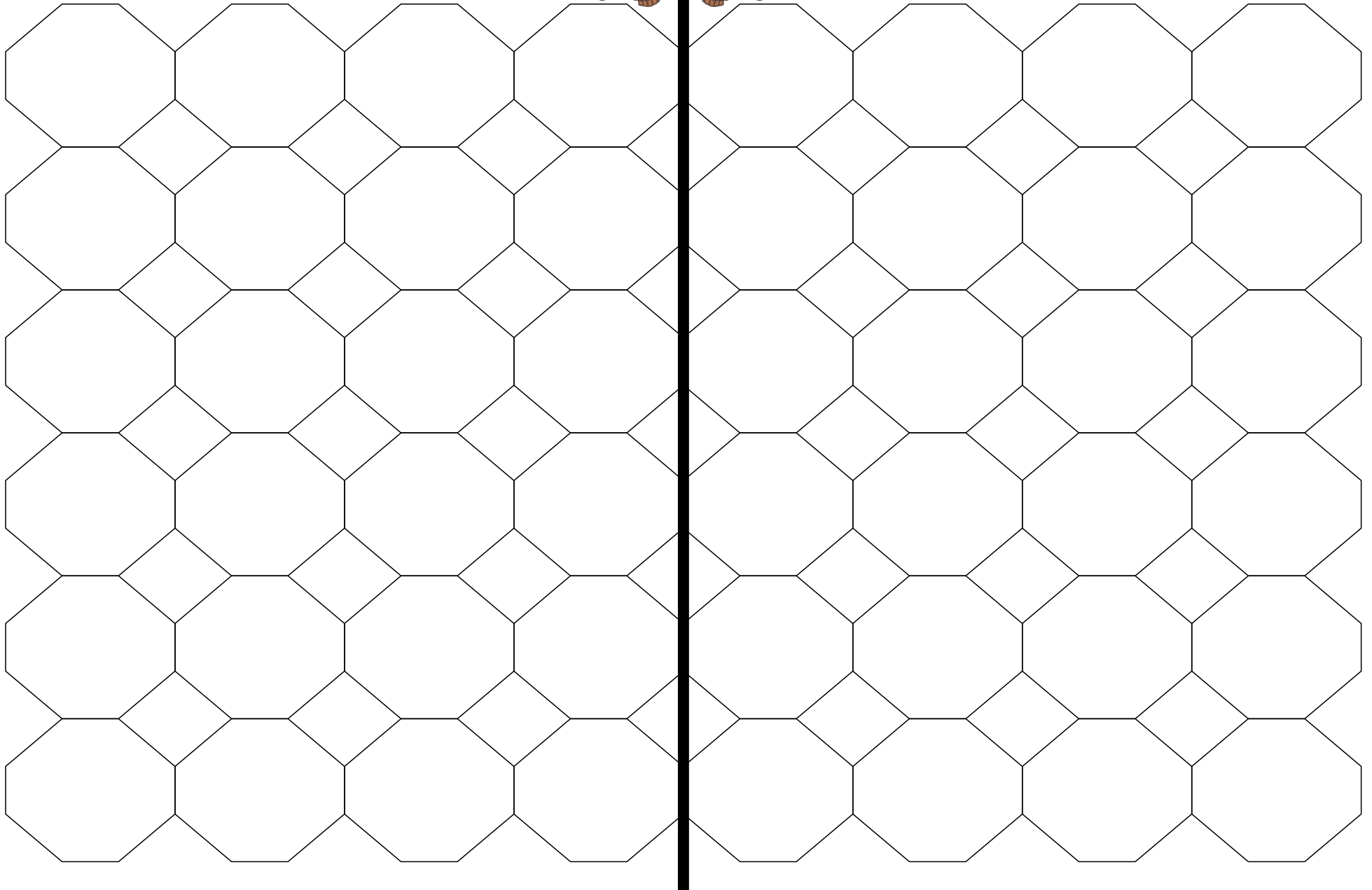


# SIMETRÍA PANAL DE ABEJAS





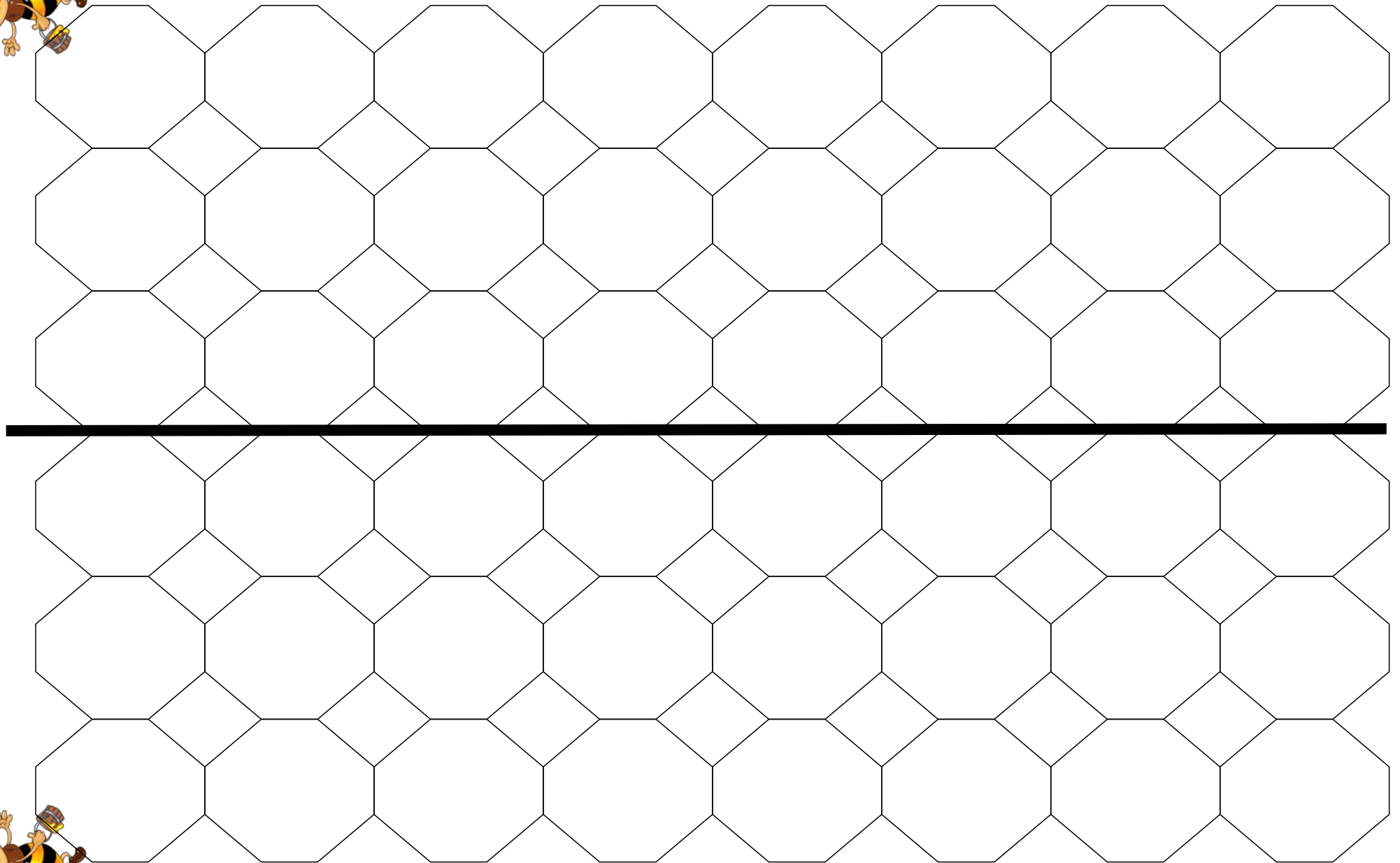
# SIMETRÍA PANAL DE ABEJAS





AULAPT.ORG

# SIMETRÍA PANAL DE ABEJAS







# SIMETRÍA PANAL DE ABEJAS



A large grid of hexagons used for a symmetry exercise. The grid is divided into two halves by a vertical black line. The left half contains a pattern of colored hexagons: red, blue, yellow, green, green, blue, blue, yellow, red, green, green, red, red, blue, red, blue. The right half is empty, consisting of a grid of white hexagons for coloring or drawing.



# SIMETRÍA PANAL DE ABEJAS

A large grid of hexagons used for a symmetry exercise. The grid is divided into two halves by a vertical black line. The left half contains a pattern of colored hexagons, while the right half is empty for copying. The pattern on the left consists of six rows of four hexagons each, with colors as follows:  
Row 1: Yellow, Blue, Yellow, Red  
Row 2: Red, Yellow, Green, Blue  
Row 3: Blue, Green, Blue, Yellow  
Row 4: Red, Yellow, Red, Yellow  
Row 5: Green, Red, Blue, Red  
Row 6: Blue, Red, Blue, Red



# SIMETRÍA PANAL DE ABEJAS



A large grid of hexagons used for a symmetry exercise. The grid is divided into two halves by a vertical black line. The left half contains a pattern of colored hexagons, while the right half is empty for copying. The pattern on the left consists of six rows of four hexagons each, with colors repeating in a specific sequence: Row 1: Blue, Orange, Yellow, Green; Row 2: Red, Blue, Grey, Blue; Row 3: Blue, Green, Blue, Yellow; Row 4: Red, Orange, Red, Blue; Row 5: Green, Grey, Blue, Red; Row 6: Blue, Red, Yellow, Orange.